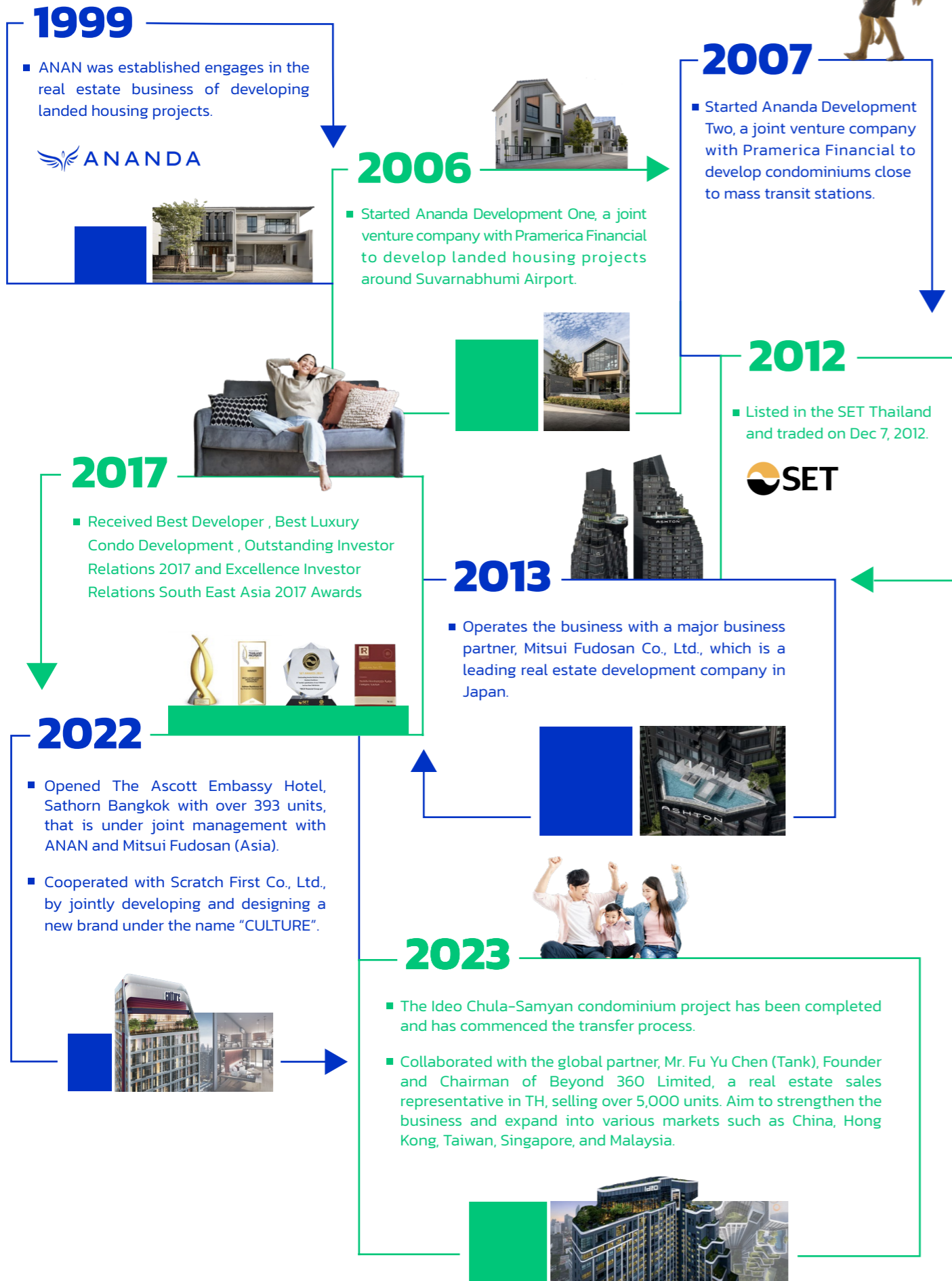


# KEY MILESTONES



# FACT SHEET

## Q2/2024

**ANANDA**

IF YOU CAN'T CHANGE THE WORLD,  
CHANGE YOURSELF.



Everyone in Bangkok is different, meaning anyone can fit in.

### Ananda Development Public Company Limited

FYI Center building, 11<sup>th</sup> Floor, 2525 Rama 4 Road, Klongtoei, Klongtoei District, Bangkok 10110

+662-056-2222    Arpha@ananda.co.th    IR@ananda.co.th

#### DISCLAIMER

The information contained herein is being furnished on a confidential basis for discussion purposes only and only for the use of the recipient, and may be subject to completion or amendment through the delivery of additional documentation. Except as otherwise provided herein, this document does not constitute an offer to sell or purchase any security or engage in any transaction. The information contained herein has been obtained from sources that Ananda Development Public Company Limited considers to be reliable; however, ANNA makes no representation as to, and accepts no responsibility or liability for, the accuracy or completeness of the information contained herein. Any projections, valuations and statistical analyses contained herein have been provided to assist the recipient in the evaluation of the matters described herein; such projections, valuations and analyses may be based on subjective assessments and assumptions and may utilize one among alternative methodologies that produce differing results; accordingly, such projections, valuations and statistical analyses are not to be viewed as facts and should not be relied upon as an accurate representation of future events. The recipient should make an independent evaluation and judgment with respect to the matters contained herein.

## BUSINESS OVERVIEW

Ananda Development Public Co., Ltd. was established on 29 July 1999 and listed on the Stock Exchange of Thailand on December 7, 2012. The Company operates a real estate development business in Bangkok and its vicinity including condominium projects by focusing on the connections to mass transit stations in order to create convenient and comfortable living of residents, housing projects and townhouses with the unique concept and architectural design that respond to the needs of each customer segment.



### Mission

We are number one in mass transit living through ambition, determination and innovation. We pursue optimization of capital, people development and ethical behavior.



### Target

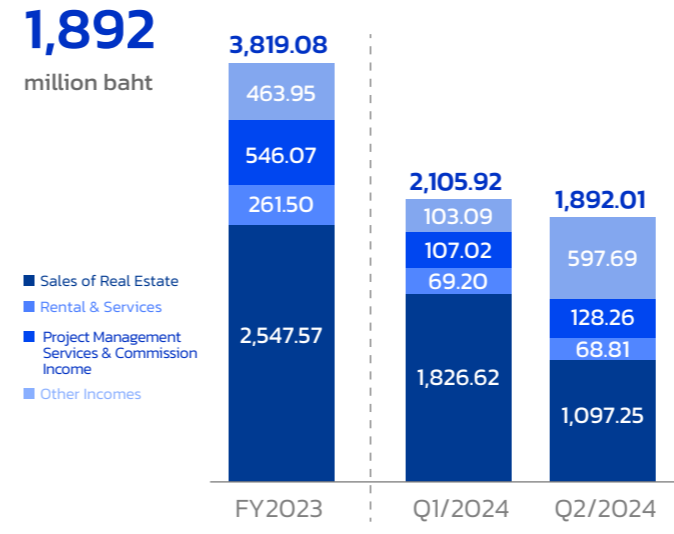
Urban Living Solutions  
 "Great Idea Starts with Great Understanding"  
 "Great Solution Happens at the Right Place and Time"  
 "Great City is a Place Where People Co-Living"

### Vision

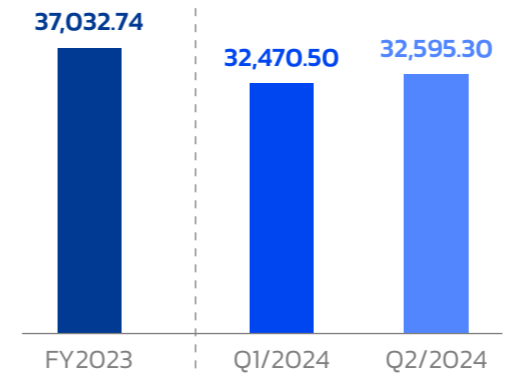
Together, we are passionate about creating vibrant lives by continuously innovating urban living solutions based on major transport systems.

## FINANCIAL HIGHLIGHT (Unit : Million Baht)

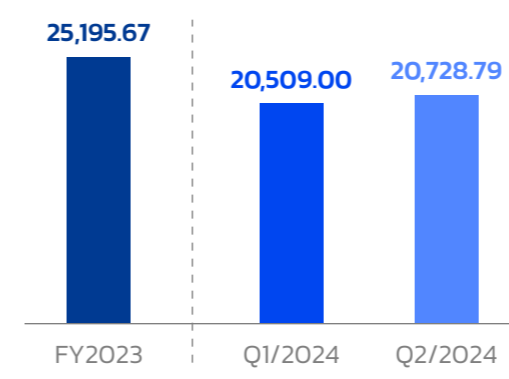
### Total Revenue Breakdown



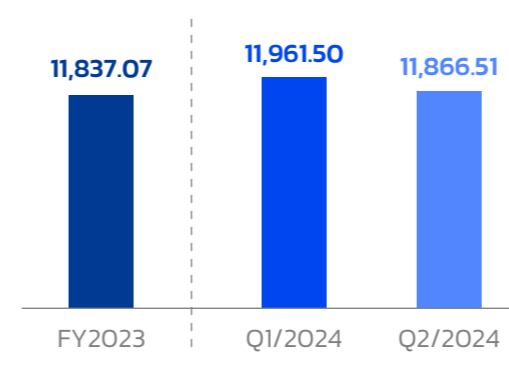
### Total Asset



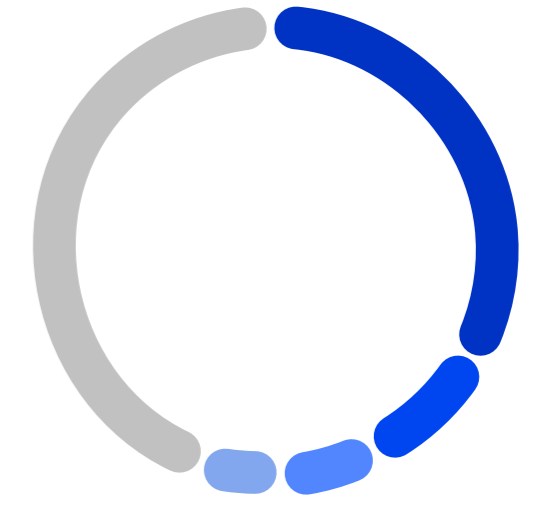
### Total Liabilities



### Total Shareholders' Equity



## SHAREHOLDER STRUCTURE



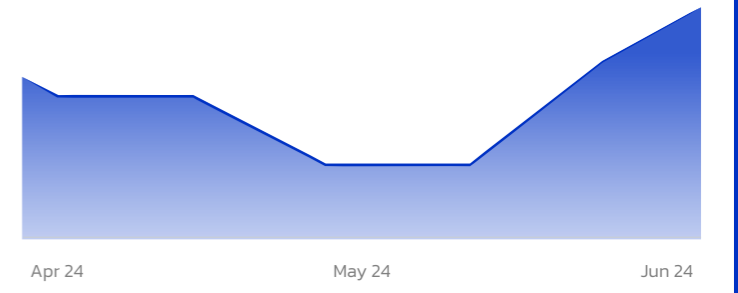
- **33.43%** Mr. Chanond Ruangkritya
- **8.87%** Mr. Pipat Paniangvait
- **5.91%** Thai NVDR Company Limited
- **4.97%** Miss Patcharavalai Ruangkritya
- **46.82%** Others

## STOCK INFORMATION



As of Jun 30, 2024

First Trade Date	07 Dec. 2012	Par Value	0.10 Baht
Authorized Capital	478 Million Baht	Paid-up Capital	417 Million Baht
Listed Shares	4,166 Million Baht	Paid-up Stock	4,166 Million Baht
Symbol	ANAN	Last Price	0.68 Baht
		52 Week High/Low	0.87 - 0.58 Baht



## PRODUCT'S SEGMENT

### CONDOMINIUM'S BRAND

#### MID-RANGE

IDEO

#### LOW-RANGE

ELIO  
ANDA

#### UP-SCALE

IDEO  
MOBI

culture

URBANIO

#### LUXURY

ASHTON  
ARTALE

#### HIGH-END

CO  
CO  
PARC

IDEO  
Q

AIRI

#### SUPER VALUE-RANGE

Atoll  
Balli Beach

UNIO